



Chuangwei Electronic Equipment Manufactory Ltd

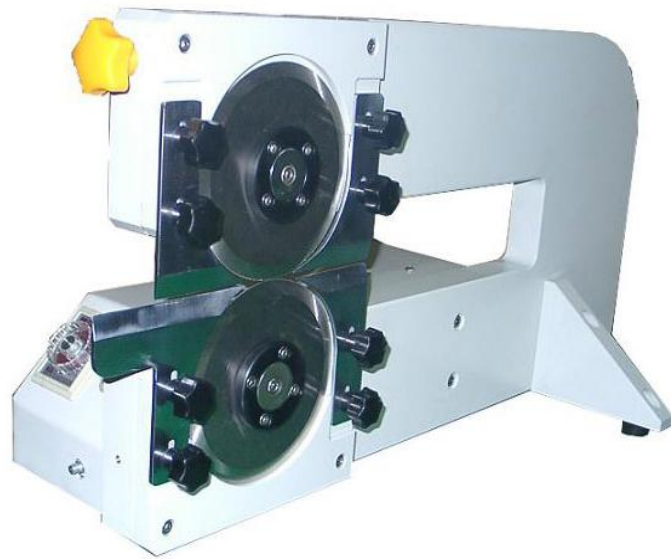
Tel:86-755-33581320

Fax :86-769-85848625

E-mail:s5@smtfly.com

Add: NO.8 Kang Xiang East Street,Chong Tou Village,Chang An Town,Dong Guan City,Guang Dong Province,China.

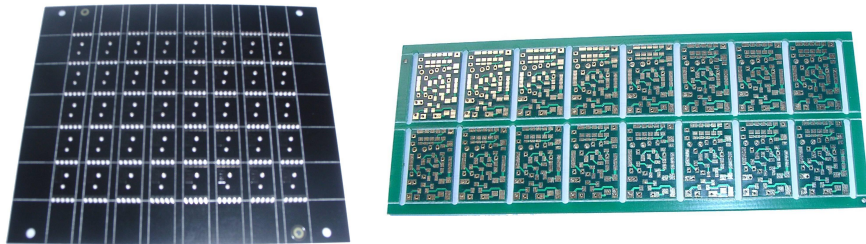
Email: s5@smtfly.com / s4@smtfly.com <https://www.pcb-depanelizer.com>



Feature:

- Minimize the shearing stress to avoid micro-cracks of the solder joints
- Guiding device of the "V-CUT" of the PCB
- Ball bearing slideways for easy setting of the PCB edge guides
- Ball bearing slideways for easy setting of the height of the tabletop
- 3 easy operating modes: Manual by handwheel,semi-automatic by pressing the start button or fully-automatic by continuous running
- Cutters can be re-grinded
- The shape of the cutter can be customer made

CWVC-1 PCB Depanelizers



Specification:

Size:	630mm x 270mm x 320 mm
The Longest Minimize:	330mm
Minimize Speed:	0-40mm/s
Minimize thickness:	1.0-3.5mm
Machine Weight:	25Kg

www.pcbseparator.com

Wechat/Whatapp:+86 13684904990